

NAME ►

DATE ►

1. Pete is studying a frog in a clear plastic cup.

Which tool helps Pete see small parts of the frog?

- A. Centimeter ruler
- B. Colored pencils
- C. Graph paper
- D. Hand lens

10:45 Wednesday	10:45 Wednesday	10:45 Wednesday	10:45 Wednesday
Rocks	Green plants	Sand	Trees
Sunlight	Fish	Saltwater	Leaves
Air	Insects	Shells	Bark
Bubbles	Kids swimming	Sea weed	Sap
1.	2.	3.	4.

2. Which lists living parts of a pond habitat?

- A. 1
- B. 2
- C. 3
- D. 4

3. Shakita lives in Raleigh, NC, and is moving to the NC mountains. It's winter. Which best tells how she might adapt to her new habitat?

- A. Drink less water
- B. Eat less food
- C. Carry fewer books
- D. Wear warmer clothing

I wonder about having a bird for a pet. A bird is a good pet because it lives in a cage.	I have a clean cage for the bird. A water bottle fits on the side. Food cups attach too.	I read about pets on the Internet. I like the parakeet. My project is to teach a parakeet to say words.	I brought a bird home in a box with holes in it. The bird is yellow and sings.
1.	2.	3.	4.

4. Look at the notebooks above. Which has a good plan for keeping a pet bird.

- A. 1
- B. 2
- C. 3
- D. 4

5. Tess is watching birds feed their babies. The mother bird is a speckled brown color. How does the mother bird's color help keep her safe?

- A. Brown birds build stronger nests
  - B. Dark colored animals need less food
  - C. Her color blends in with the habitat
  - D. Speckled colored feathers don't get wet
- 

6. Bob made a habitat for a fiddler crab. Why does Bob change the water weekly?

- A. Bob's model doesn't clean up and recycle water like Earth
  - B. Loose sand makes the water too salty
  - C. Salt crystals grow in the water and harm the fiddler crabs
  - D. Without new water, the salt would evaporate out
- 

7. Lamar's strong legs can climb rocks, swim and ride a bike. Which best describes how our body helps us adapt to different activities?

- A. We have special shoes for the pool
  - B. Lamar wears a jacket to ride a bike
  - C. Our body parts move in many different ways
  - D. Sunshine warms our body so we can climb
- 

8. Lea likes to study butterflies. Lea read that butterflies are "solar powered".

Read the entry in her science notebook. Look at line 4. What is the best action?

- A. Call a weather station
- B. Read about butterfly plants
- C. Record the weather
- D. Research climate change

Lea's Science Notebook

Question: Do butterflies really move more when the sun is shining?
Procedure:
1 Observe the butterflies in the school garden
2 Draw and write what I see
3 Record the time
4 _____

Habitat Information Table

Animals	Frogs	Crabs	Millipedes	Dogs
Food	Plankton	Dog Food Plankton	Rotting log Potato	Dog food
Water	Aged Water Treated Water	----2----	Rain water	Fresh water Tap water
--- ---	Plants Rocks	Tunnels under shells	----3----	Dog house Our house
Space	Aquarium	Marshland	----4----	Yard Our house

USE THE TABLE TO ANSWER QUESTIONS 9, 10, 11, 12 and 13.

9. Which title belongs in space 1?

- A. Light
- B. Safety
- C. Shelter
- D. Warmth

10. What is the best choice for space 2?

- A. Fresh water
- B. Rain water
- C. Salt water
- D. Tap water

11. What is the best choice for space 3?

- A. In tops of trees
- B. On green plants
- C. On wild flowers
- D. Under a rotting log

12. Which of these best describe space 4?

- A. Damp, cool forest floor
- B. Dry, warm garden soil
- C. Under rocks in a creek
- D. Wet, muddy stream bank

13. Which two organisms can be fed the same food?

- A. Crabs and dogs
- B. Dogs and frogs
- C. Frogs and millipedes
- D. Millipedes and crabs

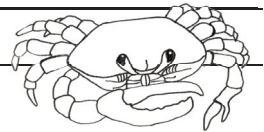
Read Amy's science notebook. Use the notebook entry to answer questions 14, 15, 16, 17 and 18.

## Amy's Science Notebook

**Question:** How much time do fiddler crabs spend in the water?

**Procedure:**

- Record the number of crabs living in the habitat.
- Observe the habitat on the hour, starting at 9:00 am.
- Record the number of crabs in the water each hour
- Stop counting at 3:00 pm.



14. What is Amy studying?

- A. Animal behavior
- B. Animal data
- C. Animal feeding habits
- D. Animal temperature

15. What is Amy trying to learn about fiddler crabs?

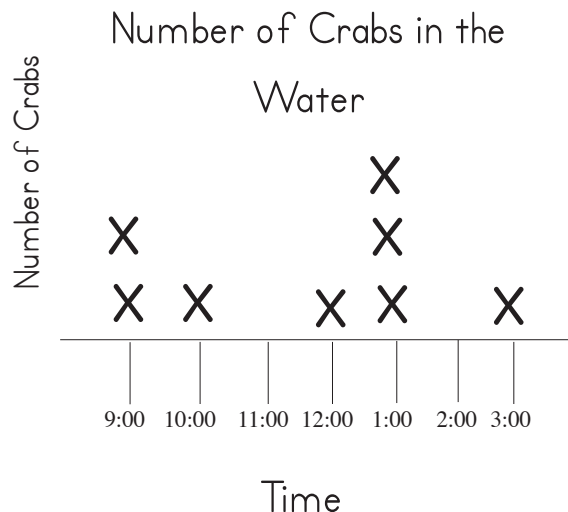
- A. Do fiddler crabs go into the water at night?
- B. How many fiddler crabs go into the water?
- C. Do fiddler crabs like warm water?
- D. How much time do fiddler crabs spend in the water?

16. Which will Amy need?

- A. Book about water habitats
- B. Clock and log sheet
- C. cm graph paper and a cm ruler
- D. Thermometer and aged water

17. Which of these is a prediction for Amy's experiment?

- A. I think fiddler crabs like cold water better than warm water
- B. I think at least 1 crab will be in the water each hour
- C. I think the fiddler crab will go into water at night
- D. I think the fiddler crabs move more on land



18. Look at the graph. How many fiddler crabs were in the water at 11:00?

- A. 0
- B. 1
- C. 2
- D. 3

19. In a 4th grade classroom, which question is best answered by observation?

- A. Are there more frogs in the rainforest than in NC?
- B. What is the biggest frog found in eastern NC?
- C. Which frog is the fastest swimmer in the world?
- D. Will dwarf African frogs swim toward a penlight?

---

20. Which of these is a question about behavior?

- A. Are there more millipedes in the rainforest than in NC?
- B. How many legs does a millipede have?
- C. Where is the longest millipede in the world found?
- D. Will millipedes choose damp or dry wood?

---

USE THE DRAWING TO ANSWER QUESTIONS 21, 22, 23 and 24.

21. Which body parts have the job of hiding a dwarf African frog in his habitat?

- A. 1 and 6
- B. 2 and 5
- C. 4 and 6
- D. 3 and 6

22. Which body parts are made to push against the water to move?

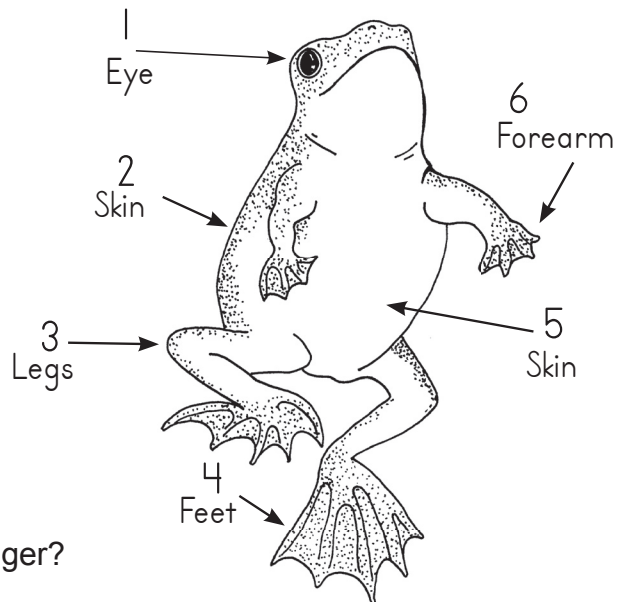
- A. 1 and 2
- B. 2 and 3
- C. 4 and 6
- D. 5 and 2

23. Which strong body parts move a frog out of danger?

- A. 1 and 5
- B. 3 and 4
- C. 5 and 2
- D. 6 and 1

24. The dwarf African frog lives in an aquatic habitat but has nostrils. What other body part might you expect this adult frog to have?

- A. Tail
- B. Gills
- C. Lungs
- D. Nose



25. In the summer, Pat spends all day fishing on a boat. His shirt filters out harmful UV rays. How has Pat adapted to his habitat?

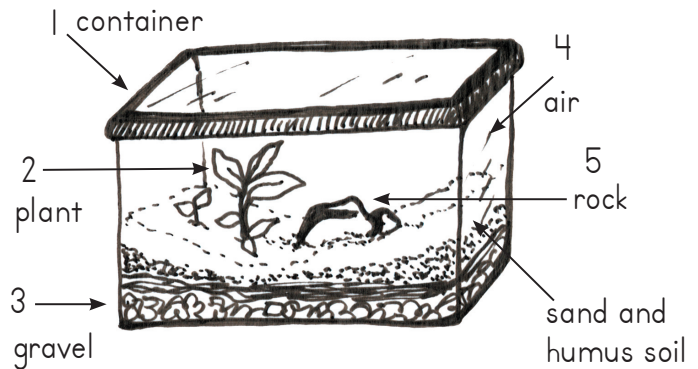
- A. He carries extra water
  - B. He has an extra fishing pole
  - C. He packs lunch and a snack
  - D. He wears special clothing
- 

26. Which part of this habitat is living?

- A. 2
- B. 3
- C. 4
- D. 5

27. Jon is making a home for a fiddler crab. What is missing?

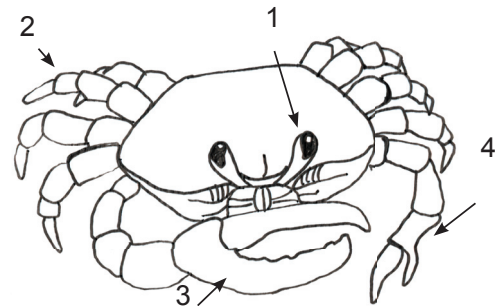
- A. Rotting logs
- B. Salt water
- C. Wet leaves
- D. Wood chips



USE THE SCIENTIFIC DRAWING TO ANSWER QUESTIONS 28 and 29.

28. Which body part is used for feeding?

- A. 1
- B. 2
- C. 3
- D. 4



29. Think about how crabs move. What body part moves the crab on land?

- A. 1
  - B. 2
  - C. 3
  - D. 4
- 

30. Which best describes how our eyes help us survive in our habitat?

- A. We see food, shelter and danger
- B. We see outdoor habitats and color
- C. We see sunshine, rain and snow
- D. We see to drive a car to stores

Mika and Kim are eating a snack near a wide river.  
A deer moves through the trees and down to the water.

31. How is the river important in the deer's habitat?

- A. The river is shelter for the deer
- B. The river protects the deer from predators
- C. The river provides water to drink
- D. The water provides food for the deer

32. How are Mika and Kim like the deer?

- A. People are not like deer
- B. The river gives them shelter
- C. The river protects them from predators
- D. They need water to drink

33. What can we learn from watching deer feeding in the woods?

- A. How woodland animals make a shelter
- B. The time of day that animals drink water
- C. What deer eat in the wild
- D. What all animals eat in the woods

4:30 pm Thursday	4:30 pm Thursday	4:30 pm Thursday	4:30 pm Thursday
The feeder is full	A squirrel is trying	This is a recipe for	The leaves are all
of black sunflower	to get in the feeder.	bird treats. Use	off the tree.
seeds for the birds.	A big brown bird	peanut butter,	Winter is
Seed is on the	dove at the squirrel's	pinecones and bird	coming soon. The
ground too. <b>1.</b>	head. <b>2.</b>	seed. <b>3.</b>	air is cold. <b>4.</b>

34. Tyra's family watches birds at the bird feeder in their backyard.  
Which notebook entry describes animal behavior?

- A. 1
- B. 2
- C. 3
- D. 4